



1,000 Gallon Septic Tank

CONCRETE PRODUCTS

Terry Lane
Glocester, RI 02814
(401) 568-8874

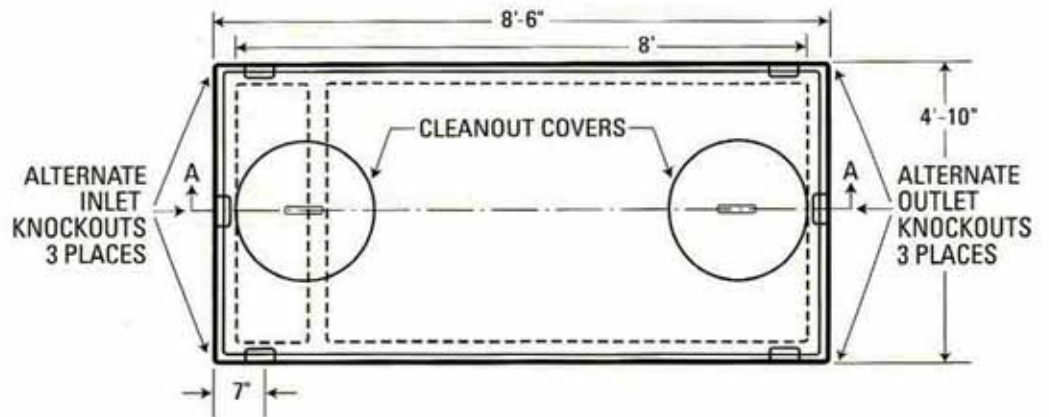
PRODUCT CODE CPST-1000

DESIGN NOTES:

- Inlet baffle is a pre-cast unit with the top section of the septic tank
- Concrete is 5000 psi at 28 days
- Sealed with a butyl rubber
- Excavation must be at least 12" wider and longer than tank size



TOP VIEW



SECTION AA

