



# Distribution Box - 7

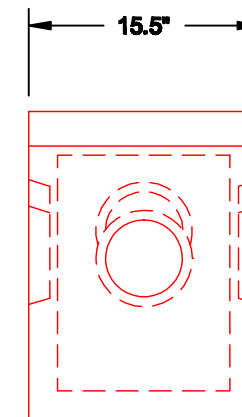
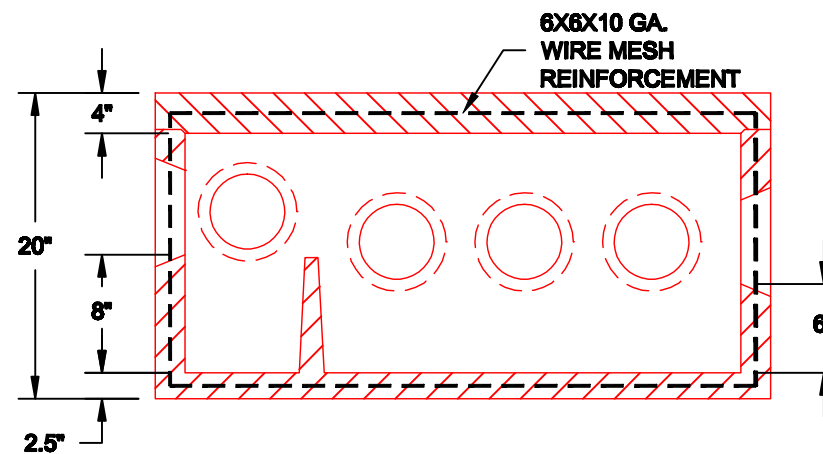
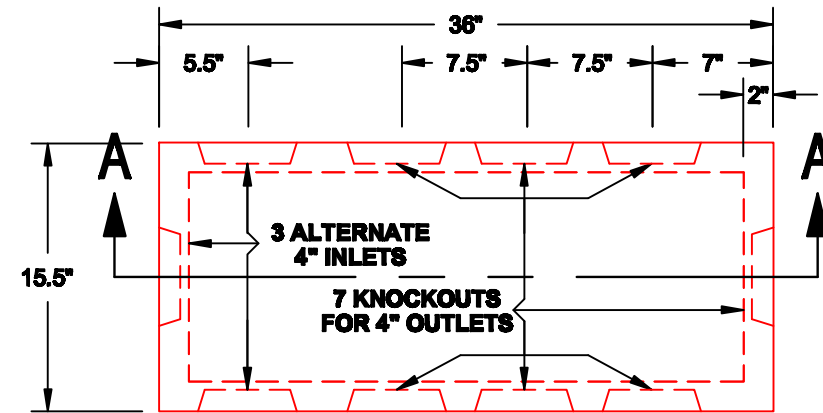
**CONCRETE  
PRODUCTS**

Terry Lane  
Glocester, RI 02814  
**(401) 568-8874**

PRODUCT CODE  
**CPDB-7**

**DESIGN NOTES:**

- Inlet baffle cast in place.
- Concrete is 5000 psi at 28 days.



**SECTION A-A**

**Pre-cast Bulkheads, Steps, and Septic Tanks**