



78" Leaching Dry Well

CONCRETE PRODUCTS

356 Tuckie Road
N. Windham, CT 06256

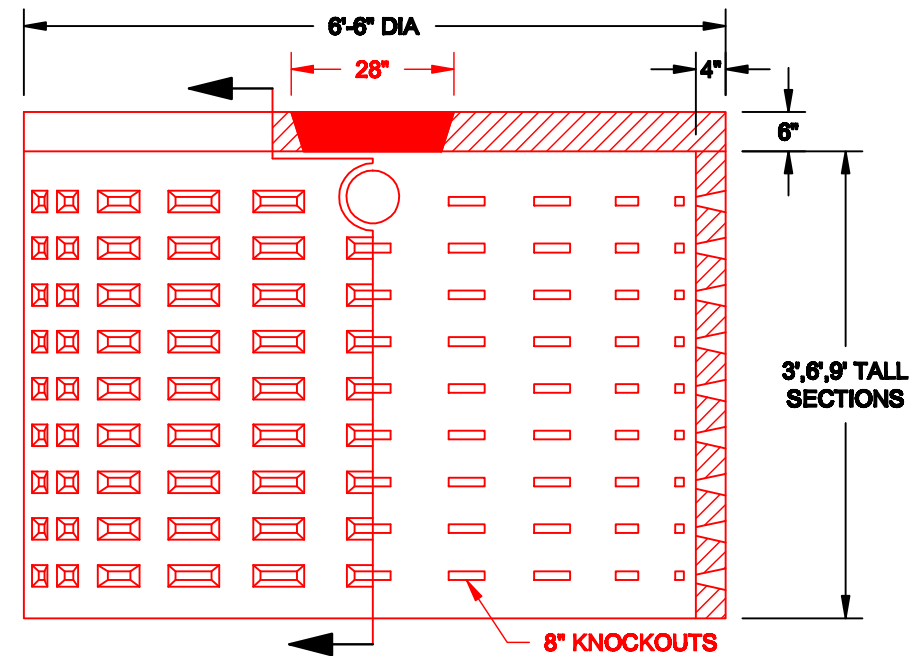
(860) 423-4144

FAX (860) 456-1377

PRODUCT CODE
CPDW

DESIGN NOTES:

- Concrete is 5000 psi at 28 days.
- Available design loading AASHTO H20-44.



Pre-cast Bulkheads, Steps, and Septic Tanks