



96" Leaching Dry Well

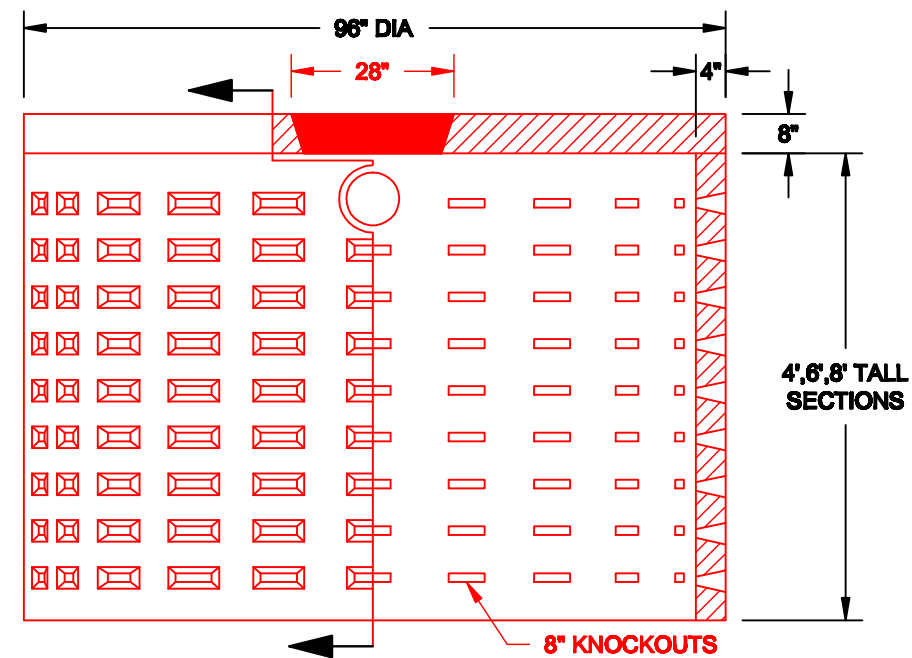
CONCRETE PRODUCTS

Terry Lane
Glocester, RI 02814
(401) 568-8874

PRODUCT CODE
CPDW

DESIGN NOTES:

- Concrete is 5000 psi at 28 days.
- Available design loading AASHTO H20-44.



Pre-cast Bulkheads, Steps, and Septic Tanks