



# Flow Diffuser 4x8/L

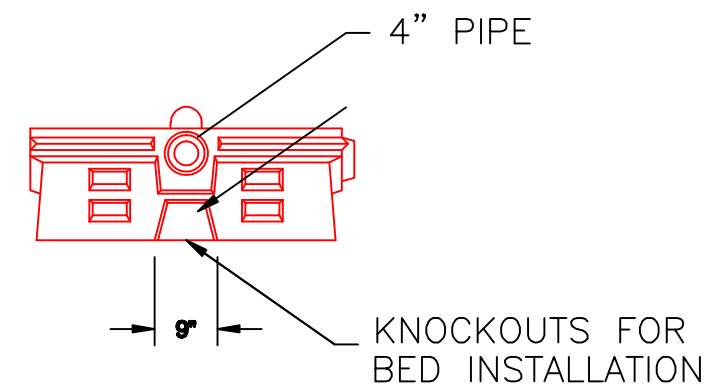
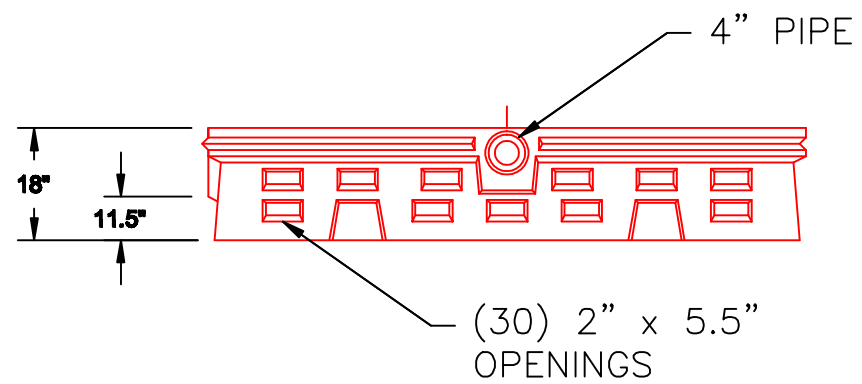
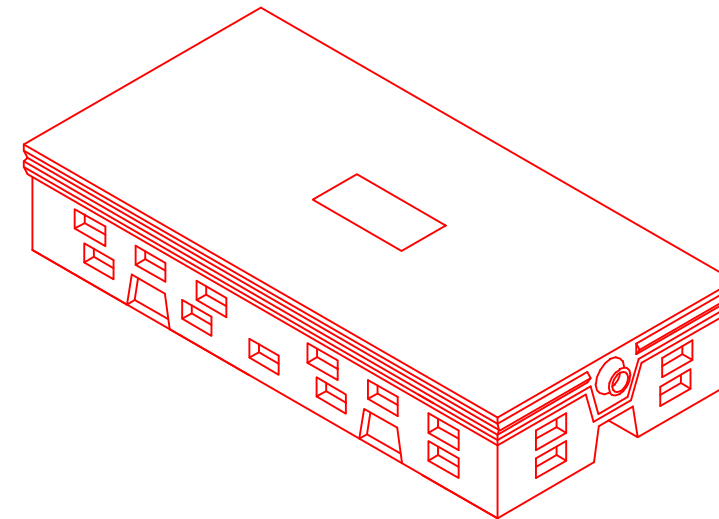
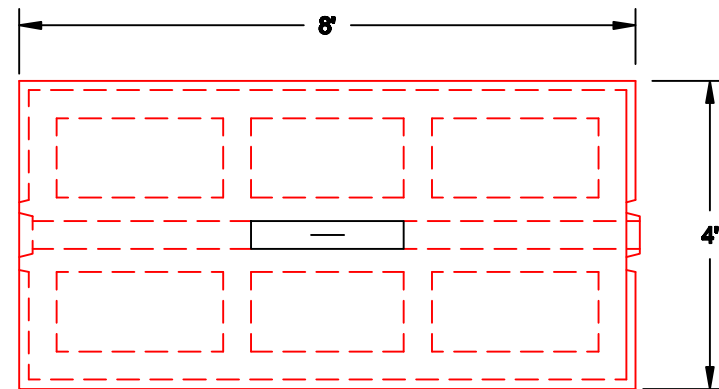
**CONCRETE  
PRODUCTS**

Terry Lane  
Glocester, RI 02814  
**(401) 568-8874**

**PRODUCT CODE  
CPFD  
4x8/L**

**DESIGN NOTES:**

- Concrete is 5000 psi at 28 days.
- Available design loading AASHTO H20-44.



**Pre-cast Bulkheads, Steps, and Septic Tanks**