



# 1000 Gal-2 Compartment Tank

## CONCRETE PRODUCTS

Terry Lane  
Glocester, RI 02814  
**(401) 568-8874**

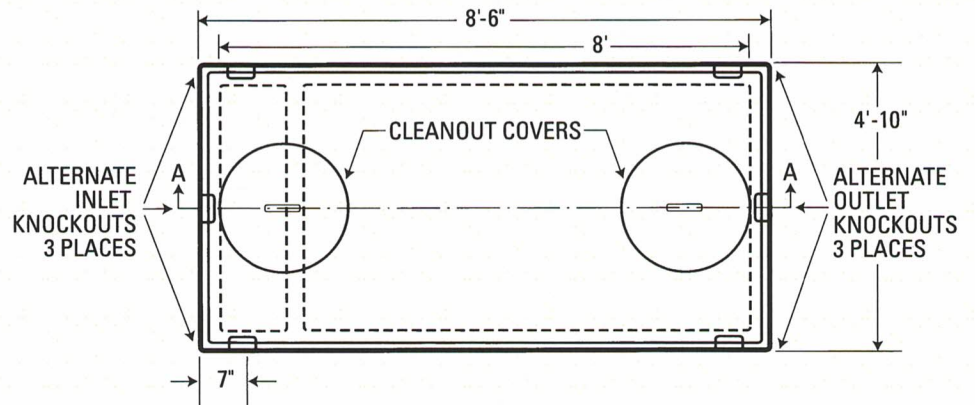
PRODUCT CODE  
**CPST-1000**  
2 COMP

### DESIGN NOTES:

1. All joints sealed with Butyl rubber sealant.
2. Top, bottom, & sides reinforced with #3 rebar.
3. Inlets and outlets have State- approved seals.
4. Concrete strength 5000 P.S.I. min. 28 days.
5. Cover placarded - DANGER - POISON GAS - DO NOT ENTER



### TOP VIEW



### SECTION AA

