



# 1,000 Gallon Grease Trap

## CONCRETE PRODUCTS

Terry Lane  
Glocester, RI 02814  
(401) 568-8874

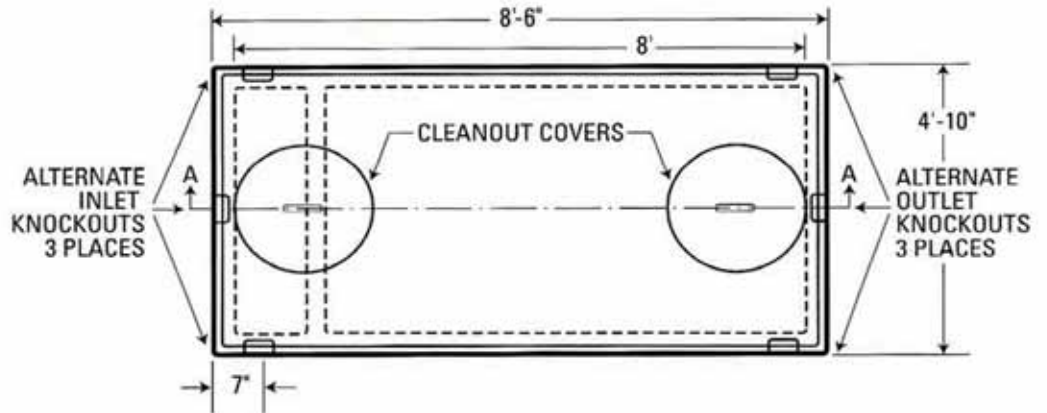
PRODUCT CODE  
**CPGT-1000**

### DESIGN NOTES:

- Inlet baffle is a pre-cast unit with the top section of the septic tank
- Concrete is 5000 psi at 28 days
- Sealed with a butyl rubber
- Excavation must be at least 12" wider and longer than tank size



### TOP VIEW



### SECTION AA

