



1000 Gal-2 Compartment Tank

H-20

CONCRETE PRODUCTS

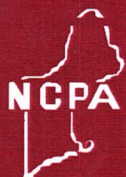
Terry Lane
Glocester, RI 02814
(401) 568-8874

PRODUCT CODE CPST-1000

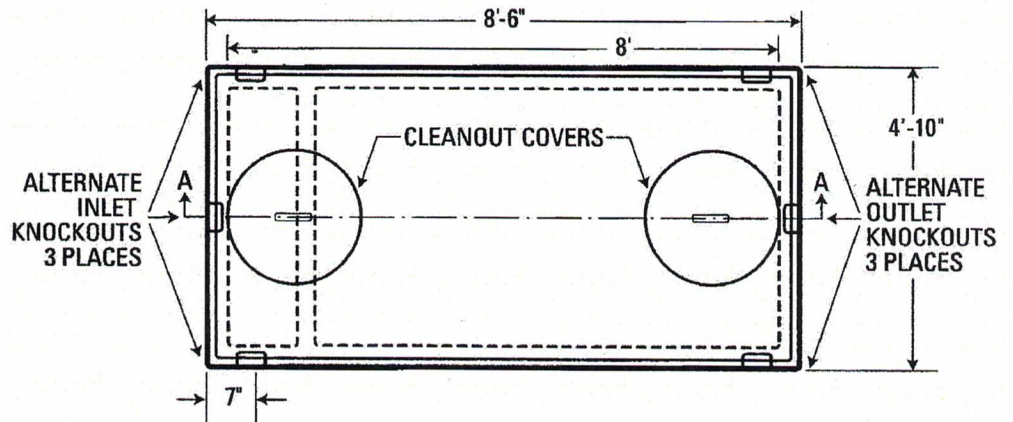
**2 COMP
H-20**

DESIGN NOTES:

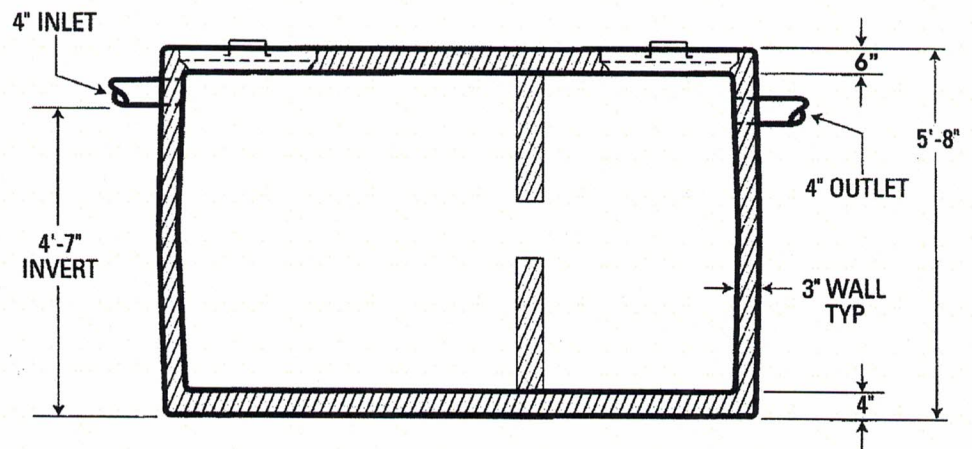
- Inlet and outlet baffle to be made of PVC pipe
- Concrete is 5000 psi at 28 days
- Design Loading AASHTO H-20
- Sealed with a butyl rubber
- Excavation must be at least 12" wider and longer than tank size



TOP VIEW



SECTION AA



Pre-cast Bulkheads, Steps and Septic Tanks