



1,500 Gallon Septic Tank

TITLE 5 - MONO

CONCRETE PRODUCTS

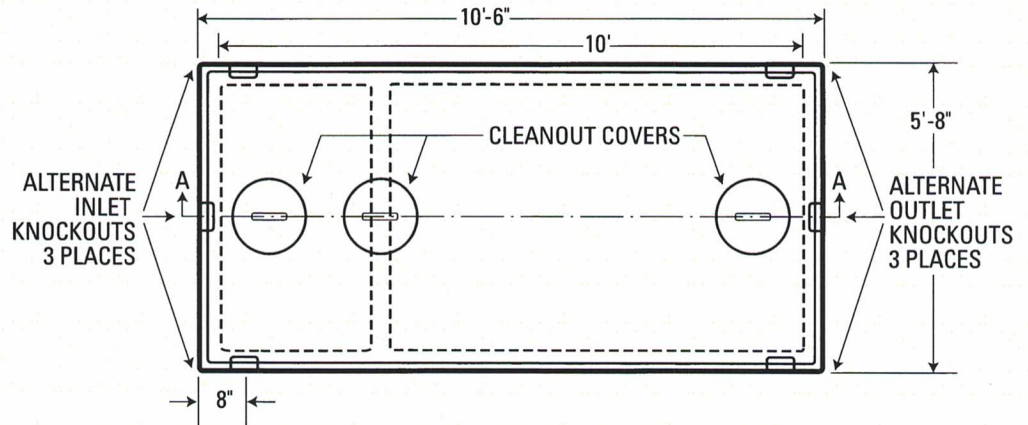
Terry Lane
Glocester, RI 02814
(401) 568-8874

PRODUCT CODE
CPST-1500
TITLE 5-
MONOLITHIC

DESIGN NOTES:

- Inlet and outlet baffle to be made of PVC pipe
- Concrete is 5000 psi at 28 days
- Sealed with a butyle rubber
- Excavation must be at least 12" wider and longer than tank size

TOP VIEW



SECTION AA

