



2,000  
2,500  
3,000

# Gallon Septic Tank HD

## CONCRETE PRODUCTS

Terry Lane  
Glocester, RI 02814  
**(401) 568-8874**

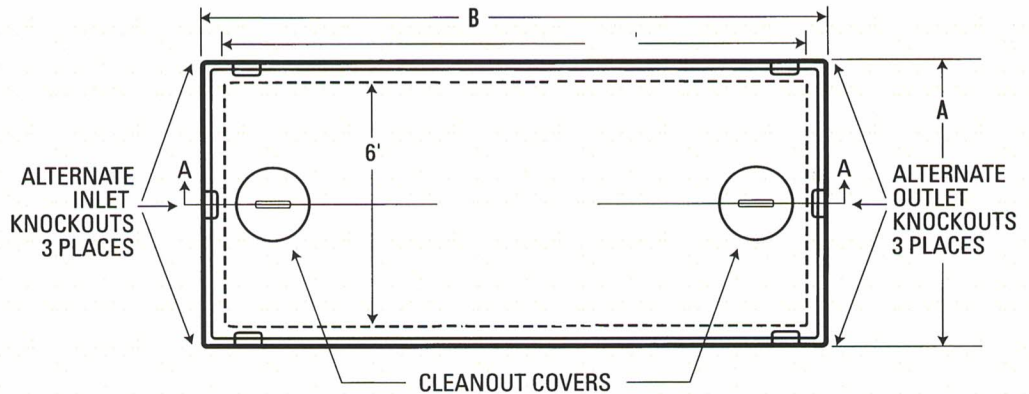
PRODUCT CODE  
**CPST-2000 HD**  
**CPST-2500 HD**  
**CPST-3000 HD**

### DESIGN NOTES:

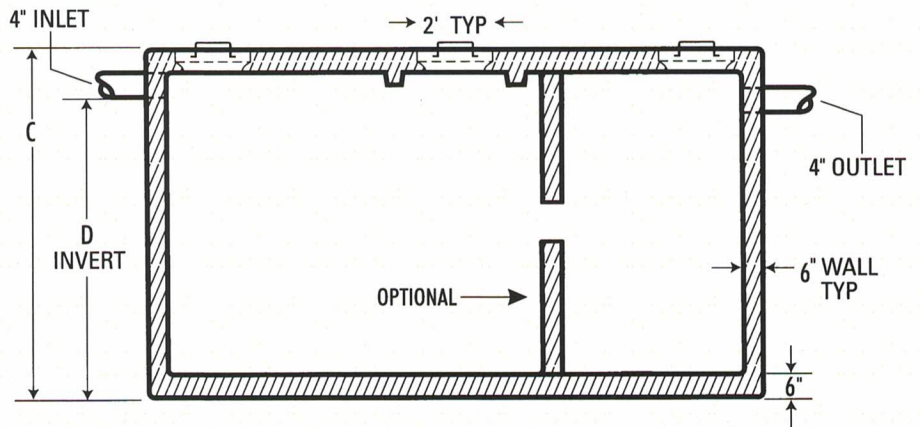
- Inlet and outlet baffle to be made of PVC pipe
- Concrete is 5000 psi at 28 days
- Sealed with a butyle rubber
- Excavation must be at least 12" wider and longer than tank size



### TOP VIEW



### SECTION AA



GALLONS	A	B	C	D
2000	84"	156"	76"	59"
2500	84"	156"	86"	70"
3000	84"	156"	96"	81"