



# 7' Dosing Chamber

## CONCRETE PRODUCTS

Terry Lane  
Glocester, RI 02814  
(401) 568-8874

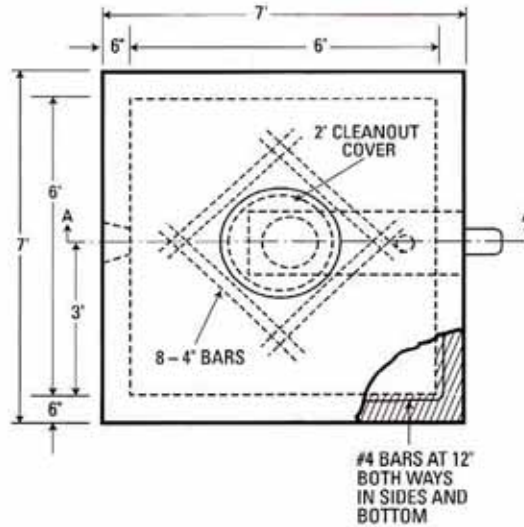
### PRODUCT CODE CPDC-7

#### DESIGN NOTES:

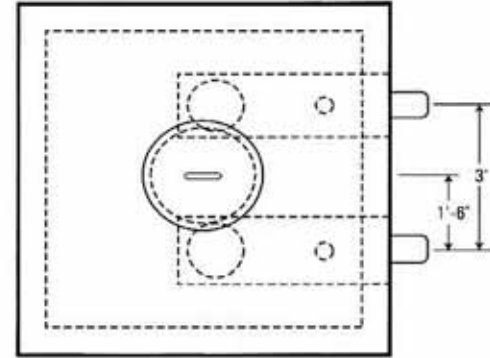
- Concrete is 5000 psi at 28 days
- Reinforcement intermediate grade steel conforming to A.S.T.M. A-305-56T & A-15-57T
- AASHO design standard for highway bridges 1965 design load H-10 S-16 direct wheel load
- 1" Min. cover on all reinforcement
- Construction joint sealed with asphalt cement or equiv



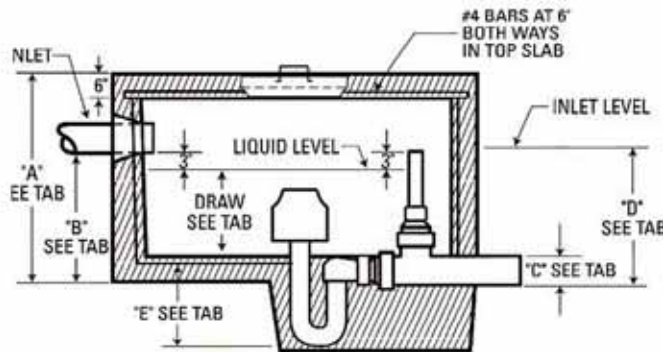
### PLAN VIEW – SINGLE SIPHON



### DOUBLE ALTERNATING SIPHON



### SECTION AA



### TABULATION CHART

GALLONS	SIPHON	DRAW	A	B	C	D	E
285	3"	13"	3'-6"	2'-1"	7'	23.5"	17.5"
375	4"	17"	3'-10"	2'-5"	12"	28.5"-29.5"	19.375"
500	5"	23"	4'-4"	2'-11"	9'-5"	36.5"-37.5"	30.5"
660	6"	30"	4'-11"	3'-6"	11"	47"-48"	40.25"

*Pre-cast Bulkheads, Steps and Septic Tanks*