



Double Meter Pit

CONCRETE PRODUCTS

Terry Lane
Glocester, RI 02814
(401) 568-8874

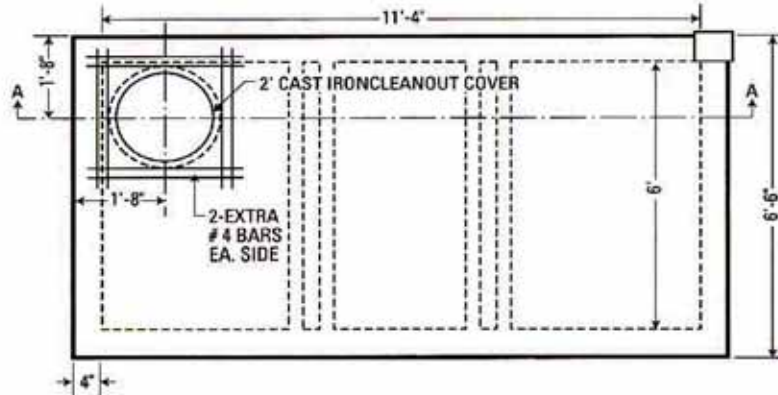
PRODUCT CODE CPMP-2

DESIGN NOTES:

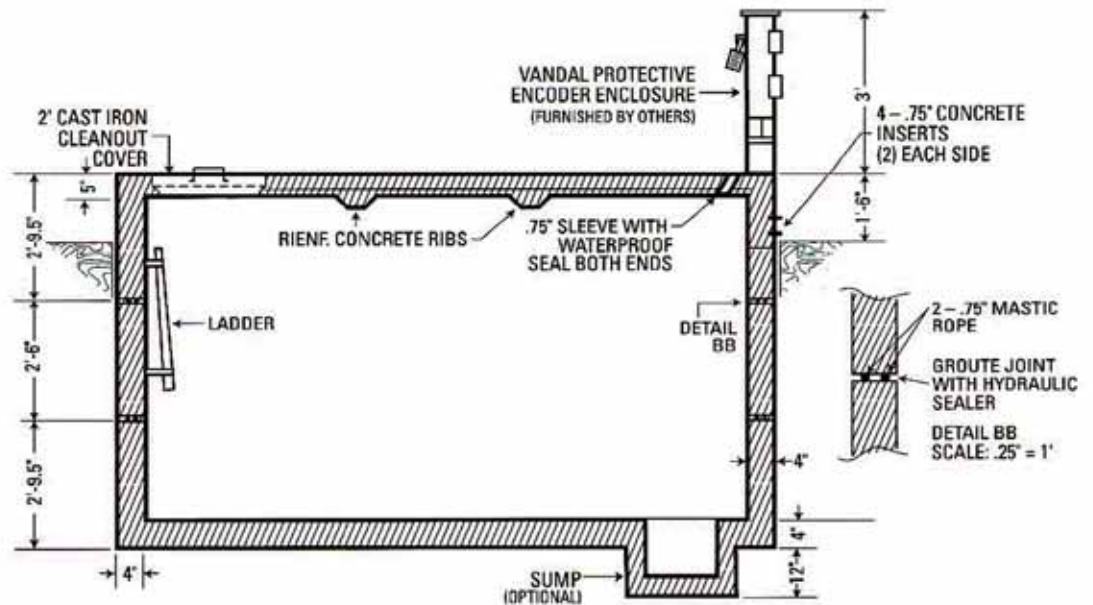
- Concrete is 5000 psi at 28 days
- Thoroughly vibrated for maximum density
- Meter pits to be water proof
- Install 1' gravel base under pits
- Ladder



TOP VIEW



SECTION AA



Pre-cast Bulkheads, Steps and Septic Tanks