



# 2,000 Gallon Septic Tank

TITLE 5

## CONCRETE PRODUCTS

Terry Lane  
Glocester, RI 02814  
(401) 568-8874

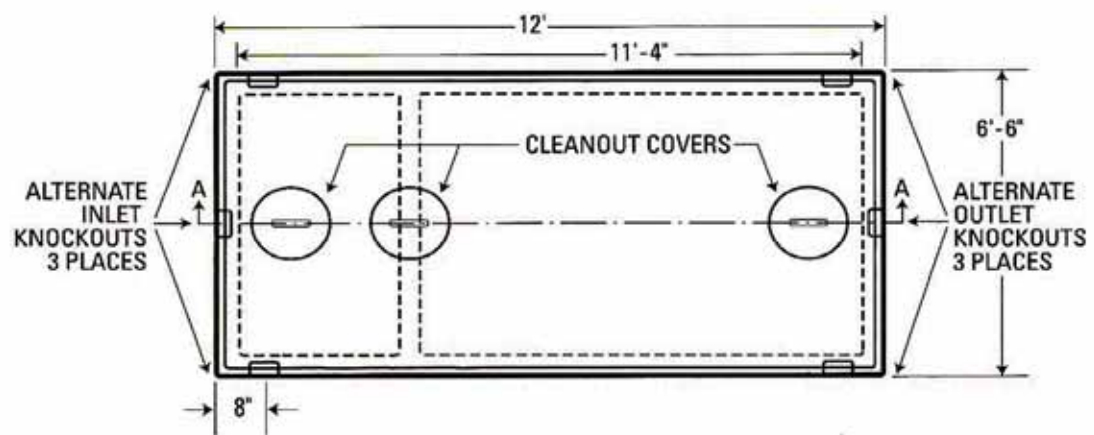
PRODUCT CODE  
**CPST-2000**  
TITLE 5

### DESIGN NOTES:

- Inlet and outlet baffle to be made of PVC pipe
- Concrete is 5000 psi at 28 days
- Sealed with a butyl rubber
- Excavation must be at least 12" wider and longer than tank size



## TOP VIEW



## SECTION AA

